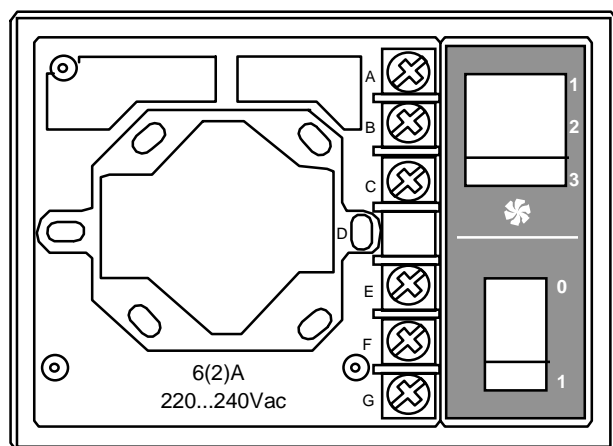


# Q6360A SWITCHING SUB-BASE

## PRODUCT DATA



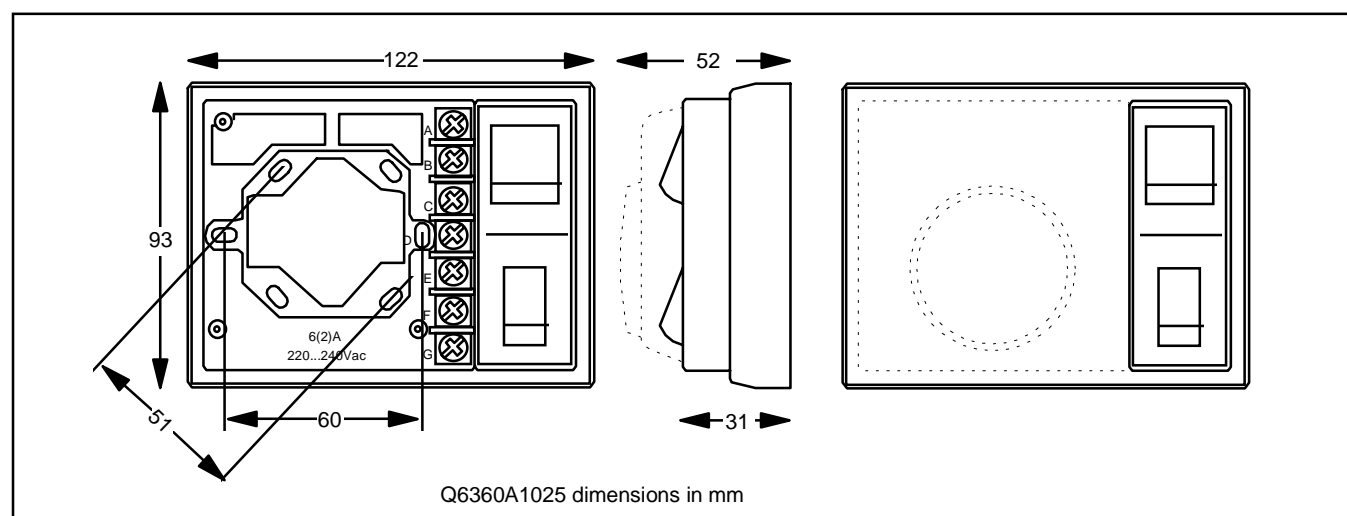
### DESCRIPTION

The Q6360A sub-base is designed to be used in conjunction with the T8078B range of modulating room controllers in fan coil, ventilating, and air conditioning systems.

The sub-base is intended for mounting on the wall, and provides a dedicated mounting platform for the controller. It has two rocker type switches - an on/off switch and a 3-position fan speed switch. These can be wired in series using an external wire link which is supplied in the package. This enables manual speed control of the circulating fan at line voltage. The low voltage modulating controller then mounts easily onto the sub-base after the line voltage wiring has been completed.

### FEATURES

- Attractive modern styling makes the product ideal for locating in any building, particularly in office and hotel environments.
- Mounts directly onto the wall or onto a wiring box or conduit box.
- Fitted with 2 rocker switches - a master on/off switch and a 3-position fan speed switch. These switches are unconnected, but can be linked using an external link wire which is supplied. This gives the flexibility of wiring to meet different application requirements.
- Product is supplied with a selection of screws for mounting and appropriate screws for securing the controller onto the sub-base.
- Easy to wire terminals with built-in conductor clamps to ensure the wiring is retained securely.
- The combination of controller and fan speed switching sub-base gives flexibility to cover most modulating fan coil applications.
- Meets requirements of European Union CE Directive - CE mark.



## SPECIFICATIONS

### VOLTAGE & SWITCH RATING

6 A resistive, 2 A inductive @ 220...240 Vac, 50...60 Hz.

### ENCLOSURE

Plastic housing with contrasting grey textured decal plate.

### INSTALLATION

Terminal screws have cable clamps for securing the wires.

Terminals are clearly labelled with letters A, B, C, E, F, and G on the plastic.

### DIMENSIONS

122 x 93 x 30 mm (sub-base alone)

122 x 93 x 52 mm (with controller mounted)

### ENVIRONMENTAL REQUIREMENTS

Operating temperature 0 to 40°C

Shipping and storage temperature -20 to 50°C

Humidity range 0 to 90% RH (non condensing)

### APPROVALS

CE mark - complies with the following standards :EN60730-1 (1992), EN55014 (1993), and EN50082-1 (1992)

### ORDERING SPECIFICATION

Q6360A1025

## INSTALLATION

### Location

The Q6360A + controller must be located in a position with good air circulation at average temperature - on an inside wall about 1.5m above floor level. Do not position in draughts, near hot or cold air sources, or expose to radiant heat from direct sunlight or from appliances, as this will affect the control performance.

### Mounting the sub-base

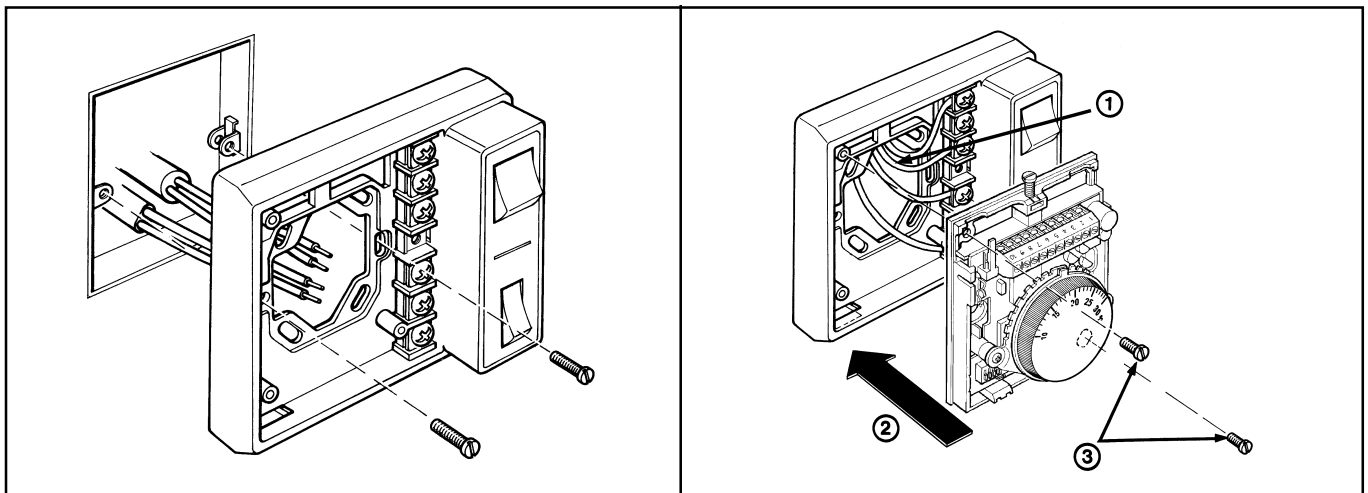
The Q6360A can be mounted directly onto a wall or onto a wiring box. The mounting holes provided allow installation on a range of different mounting boxes. Mounting screws are supplied with the sub-base.

### Wiring the sub-base

All line voltage wiring connections should be made to the sub-base, before the controller is installed or wired. Wiring access is through a hole in the centre of the base, with clear access to the terminals.

### Mounting and wiring the controller

The T8078B controller mounts onto the sub-base after the line voltage wiring has been connected. Suitable mounting screws are supplied. Line voltage sub-base wiring and low voltage controller wiring should be clearly separated as they pass through the hole in the back of the sub-base, and must comply with all relevant local electrical codes.



## WIRING

