



MXC Series
Evaporator
 For Refrigeration Applications

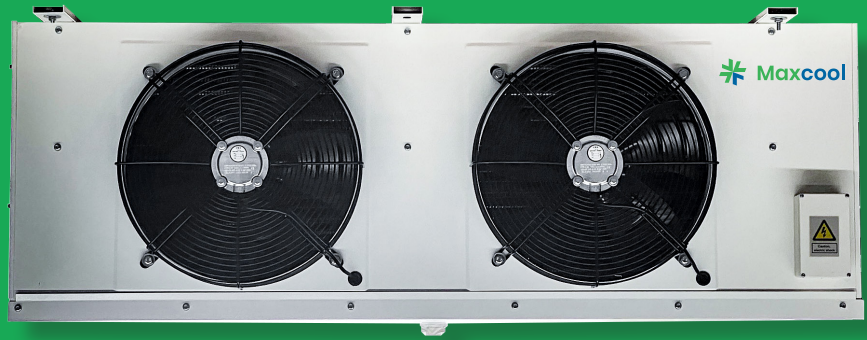


Product by



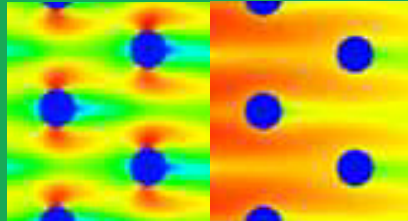
About MXC Series Evaporator

For Refrigeration Applications



- High efficiency
- Low Consumption of Motor
- High Air Flow
- The Air Supply Distance is Long
- Low Noise and Long Service Life

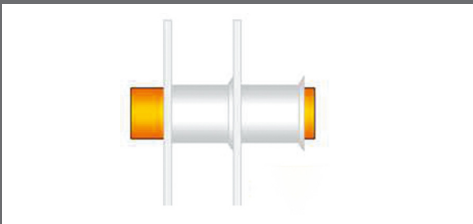
High strength aluminum foil; the punching Angle is close to 90°, which increase the contact area with the heat exchange copper tube. So that improve the heat exchange efficiency.



Hot galvanized sheet spraying process is adopted to enhance corrosion resistance and durability. Phosphating electrostatic spraying process, beautiful appearance.



The Venturi shunt makes the evaporator part more evenly, improving the heat transfer efficiency.



According to a combination of fluid mechanics and aerodynamics analysis, the system optimizes air flow organization to improve internal circulation efficiency, effectively increasing heat transfer efficiency and reducing pressure loss.

Based on the optimization of ventilation design and branch optimization, increasing the heat exchange.

Nomenclature



MXC **4** **1** **10** **E** **45**

① ② ③ ④ ⑤ ⑥

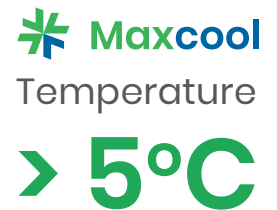
- ① **Model Type**
MXC : Maxcool
- ② **Fan Diameter**
3 : 300 mm.
4 : 400 mm.
5 : 500 mm.
- ③ **Fan Unit**
1 : 1 Unit
2 : 2 Unit

- ④ **Evaporator Area**
- ⑤ **Electric Defrost**
- ⑥ **Fin Spacing**
4.5 : 4.5 mm.
60 : 6 mm.
90 : 9 mm.

High Temperature

Air Cooled Evaporator Distance

4.5 mm (Fin Spacing)



Model	Evap Area (m ²)	Motor Parameter (380V/50Hz/3ph)			Cooling Capacity					Heater		
		Fan Diameter x amt (mm)	Air Volume (m ³ /hr)	Power (W)	Te 0°C (SC1) ^a	Te -8°C (SC2)	Te -25°C (SC3)	Te -31°C (SC4)	Te -33°C	Coil (kW)	Drain Pan (kW)	Electric Parameter
High Temperature Type : Air Cooled Evaporator Distance 4.5mm (Fin Spacing) : Temperature>5°C												
MXC 3110 E 45	10	300 x 1	1,810	90	3.15	2.10	N/A	N/A	N/A	N/A		N/A
MXC 3215 E 45	15	300 x 2	3,620	180	4.73	3.15	N/A	N/A	N/A	N/A		N/A
MXC 3220 E 45	20	300 x 2	3,620	180	6.30	4.20	N/A	N/A	N/A	N/A		N/A
MXC 3330 E 45	30	300 x 3	5,430	270	9.45	6.30	N/A	N/A	N/A	N/A		N/A
MXC 4240 E 45	40	400 x 2	8,470	380	12.60	8.40	N/A	N/A	N/A	N/A		N/A
MXC 4255 E 45	55	400 x 2	8,470	380	17.33	11.55	N/A	N/A	N/A	N/A		N/A
MXC 4260 E 45	60	400 x 2	8,470	380	18.90	12.60	N/A	N/A	N/A	N/A		N/A
MXC 5280 E 45	80	500 x 2	17,000	920	25.20	16.80	N/A	N/A	N/A	N/A		N/A
MXC 52105 E 45	105	500 x 2	17,000	920	33.08	22.05	N/A	N/A	N/A	N/A		N/A
MXC 53125 E 45	125	500 x 3	25,500	1,380	39.38	26.25	N/A	N/A	N/A	N/A		N/A
MXC 53160 E 45	160	500 x 3	25,500	1,380	50.40	33.60	N/A	N/A	N/A	N/A		N/A
MXC 54185 E 45	185	500 x 4	34,000	1,840	58.28	38.85	N/A	N/A	N/A	N/A		N/A
MXC 54210 E 45	210	500 x 4	34,000	1,840	66.15	44.10	N/A	N/A	N/A	N/A		N/A
MXC 54235 E 45	235	500 x 4	34,000	1,840	74.03	49.35	N/A	N/A	N/A	N/A		N/A
MXC 54270 E 45	270	500 x 4	34,000	1,840	85.05	56.70	N/A	N/A	N/A	N/A		N/A
MXC 54300 E 45	300	550 x 4	42,400	2,200	94.50	63.00	N/A	N/A	N/A	N/A		N/A
MXC 54330 E 45	330	550 x 4	42,400	2,200	103.95	69.30	N/A	N/A	N/A	N/A		N/A
MXC 64400 E 45	400	600 x 4	47,200	2,800	126.00	84.00	N/A	N/A	N/A	N/A		N/A
MXC 64470 E 45	470	600 x 4	47,200	2,800	148.05	98.70	N/A	N/A	N/A	N/A		N/A
MXC 64540 E 45	540	600 x 4	47,200	2,800	170.10	113.40	N/A	N/A	N/A	N/A		N/A

*Refrigerant : R404A

Medium Temperature

Air Cooled Evaporator Distance

6 mm (Fin Spacing)



Temperature

> -18°C

Model	Evap Area (m ²)	Motor Parameter (380V/50Hz/3ph)			Cooling Capacity					Heater		
		Fan Diameter x amt (mm)	Air Volume (m ³ /hr)	Power (W)	Te 0	Te -8 C.	Te -25C.	Te -31C.	Te -33C.	Coil Pipe (kW)	Water Pan (kW)	Electric Parameter
Medium Temperature Type : Air Cooled Evaporator Distance 6 mm (Fin Spacing) : Temperature > -18°C												
MXC 317 E 60	7	300 x 1	1,810	90	N/A	1.52	1.26	N/A	N/A	0.6	0.6	220V/50Hz/1ph
MXC 3212 E 60	12	300 x 2	3,620	180	N/A	2.61	2.16	N/A	N/A	1.6	0.9	220V/50Hz/1ph
MXC 3215 E 60	15	300 x 2	3,620	180	N/A	3.27	2.70	N/A	N/A	1.6	0.9	220V/50Hz/1ph
MXC 3322 E 60	22	300 x 3	5,430	270	N/A	4.79	3.96	N/A	N/A	2.0	1.1	220V/50Hz/1ph
MXC 4230 E 60	30	400 x 2	8,470	380	N/A	6.53	5.40	N/A	N/A	2.1	1.2	220V/50Hz/1ph
MXC 4240 E 60	40	400 x 2	8,470	380	N/A	8.71	7.20	N/A	N/A	4.2	1.2	220V/50Hz/1ph
MXC 4250 E 60	50	400 x 2	8,470	380	N/A	10.89	9.00	N/A	N/A	4.2	1.2	220V/50Hz/1ph
MXC 5260 E 60	60	500 x 2	17,000	920	N/A	13.07	10.80	N/A	N/A	5.7	1.5	220V/50Hz/1ph
MXC 5280 E 60	80	500 x 2	17,000	920	N/A	17.42	14.40	N/A	N/A	7.1	1.5	220V/50Hz/1ph
MXC 53100 E 60	100	500 x 3	25,500	1,380	N/A	21.78	18.00	N/A	N/A	10.1	2.2	380V/50Hz/3ph
MXC 53120 E 60	120	500 x 3	25,500	1,380	N/A	26.14	21.60	N/A	N/A	12.1	2.2	380V/50Hz/3ph
MXC 54140 E 60	140	500 x 4	34,000	1,840	N/A	30.49	25.20	N/A	N/A	14.0	2.5	380V/50Hz/3ph
MXC 54160 E 60	160	500 x 4	34,000	1,840	N/A	34.85	28.80	N/A	N/A	16.0	2.8	380V/50Hz/3ph
MXC 54175 E 60	175	500 x 4	34,000	1,840	N/A	38.12	31.50	N/A	N/A	14.0	2.5	380V/50Hz/3ph
MXC 54200 E 60	200	500 x 4	34,000	1,840	N/A	43.56	36.00	N/A	N/A	16.0	2.8	380V/50Hz/3ph
MXC 54220 E 60	220	550 x 4	42,400	2,200	N/A	47.92	39.60	N/A	N/A	18.6	2.8	380V/50Hz/3ph
MXC 54250 E 60	250	550 x 4	42,400	2,200	N/A	54.45	45.00	N/A	N/A	21.2	2.8	380V/50Hz/3ph
MXC 64300 E 60	300	600 x 4	47,200	2,800	N/A	65.34	54.00	N/A	N/A	23.9	2.8	380V/50Hz/3ph
MXC 64350 E 60	350	600 x 4	47,200	2,800	N/A	76.23	63.00	N/A	N/A	26.5	2.8	380V/50Hz/3ph
MXC 64400 E 60	400	600 x 4	47,200	2,800	N/A	87.12	72.00	N/A	N/A	26.5	2.8	380V/50Hz/3ph

*Refrigerant : R404A

Low Temperature

Air Cooled Evaporator Distance

9 mm (Fin Spacing)



Temperature

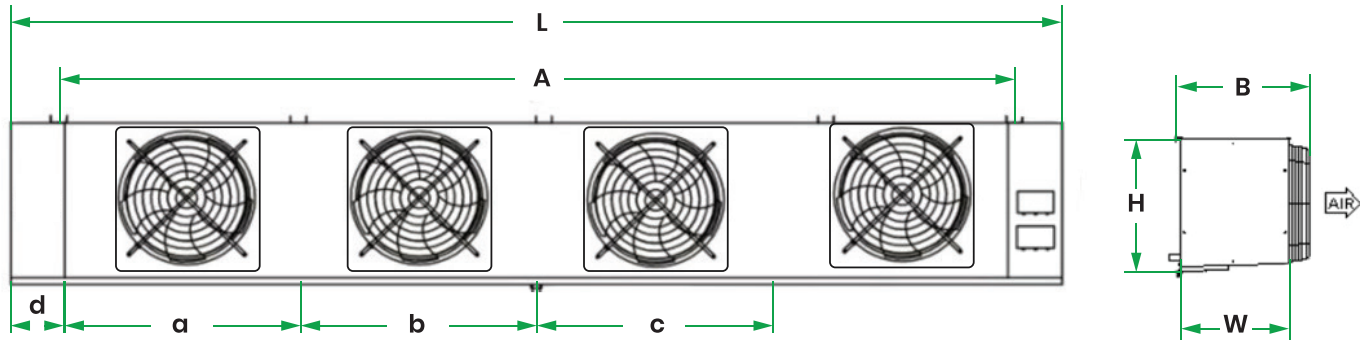
> -25°C

Model	Evap Area (m ²)	Motor Parameter (380V/50Hz/3ph)			Cooling Capacity					Heater		
		Fan Diameter x amt (mm)	Air Volume (m ³ /hr)	Power (W)	Te 0	Te -8 C.	Te -25C.	Te -31C.	Te -33C.	Coil Pipe (kW)	Water Pan (kW)	Electric Parameter
Low Temperature Type : Air Cooled Evaporator Distance 9 mm (Fin Spacing) : Temperature > -25°C												
MXC 315 E 90	5	300 x 1	1,810	90	N/A	N/A	1.00	0.80	0.72	0.6	0.6	220V/50Hz/1ph
MXC 328 E 90	8	300 x 2	3,620	180	N/A	N/A	1.60	1.28	1.15	1.6	0.9	220V/50Hz/1ph
MXC 3210 E 90	10	300 x 2	3,620	180	N/A	N/A	2.00	1.60	1.44	1.6	0.9	220V/50Hz/1ph
MXC 3315 E 90	15	300 x 3	5,430	270	N/A	N/A	3.00	2.40	2.16	2.0	1.1	220V/50Hz/1ph
MXC 4220 E 90	20	400 x 2	8,470	380	N/A	N/A	4.00	3.20	2.88	2.1	1.2	220V/50Hz/1ph
MXC 4230 E 90	30	400 x 2	8,470	380	N/A	N/A	6.00	4.80	4.32	4.2	1.2	220V/50Hz/1ph
MXC 4235 E 90	35	400 x 2	8,470	380	N/A	N/A	7.00	5.60	5.04	4.2	1.2	220V/50Hz/1ph
MXC 5240 E 90	40	500 x 2	17,000	920	N/A	N/A	8.00	6.40	5.76	5.7	1.5	220V/50Hz/1ph
MXC 5255 E 90	55	500 x 2	17,000	920	N/A	N/A	11.00	8.80	7.92	7.1	1.5	220V/50Hz/1ph
MXC 5370 E 90	70	500 x 3	25,500	1,380	N/A	N/A	14.00	11.20	10.08	10.1	2.2	380V/50Hz/3ph
MXC 5385 E 90	85	500 x 3	25,500	1,380	N/A	N/A	17.00	13.60	12.24	12.1	2.2	380V/50Hz/3ph
MXC 54100 E 90	100	500 x 4	34,000	1,840	N/A	N/A	20.00	16.00	14.40	14.0	2.5	380V/50Hz/3ph
MXC 54115 E 90	115	500 x 4	34,000	1,840	N/A	N/A	23.00	18.40	16.56	16.0	2.8	380V/50Hz/3ph
MXC 54120 E 90	120	500 x 4	34,000	1,840	N/A	N/A	24.00	19.20	17.28	14.0	2.5	380V/50Hz/3ph
MXC 54140 E 90	140	500 x 4	34,000	1,840	N/A	N/A	28.00	22.40	20.16	16.0	2.8	380V/50Hz/3ph
MXC 54155 E 90	155	550 x 4	42,400	2,200	N/A	N/A	31.00	24.80	22.32	18.6	2.8	380V/50Hz/3ph
MXC 54170 E 90	170	550 x 4	42,400	2,200	N/A	N/A	34.00	27.20	24.48	21.2	2.8	380V/50Hz/3ph
MXC 64200 E 90	200	600 x 4	47,200	2,800	N/A	N/A	40.00	32.00	28.80	23.9	2.8	380V/50Hz/3ph
MXC 64250 E 90	250	600 x 4	47,200	2,800	N/A	N/A	50.00	40.00	36.00	26.5	2.8	380V/50Hz/3ph
MXC 64270 E 90	270	600 x 4	47,200	2,800	N/A	N/A	54.00	43.20	38.88	26.5	2.8	380V/50Hz/3ph

*Refrigerant : R404A

Install Size

MXC Series



Model	L (mm)	W (mm)	H (mm)	Installed Dimension (mm)						Nozzle (Ø)		Drain Diameter
				A	B	a	b	c	d	In	Out	
MXC 3110 E 45	828	255	453	584	296	-	-	-	87	12	19	G3/4"
MXC 317 E 60												
MXC 315 E 90												
MXC 3215 E 45	1,133	255	453	889	296	-	-	-	87	12	19	
MXC 3212 E 60												
MXC 328 E 90												
MXC 3220 E 45	1,133	255	453	889	296	-	-	-	87	12	19	
MXC 3215 E 60												
MXC 3210 E 90												
MXC 3330 E 45	1,428	255	453	1,184	296	-	-	-	87	12	19	
MXC 3322 E 60												
MXC 3315 E 90												
MXC 4240 E 45	1,528	348	553	1,284	374	-	-	-	87	16	28	
MXC 4230 E 60												
MXC 4220 E 90												
MXC 4255 E 45	1,528	348	553	1,284	374	-	-	-	87	16	28	
MXC 4240 E 60												
MXC 4230 E 90												



Model	L (mm)	W (mm)	H (mm)	Installed Dimension (mm)						Nozzle (Ø)		Drain Diameter
				A	B	a	b	c	d	In	Out	
MXC 4260 E 45	1,528	418	553	1,284	461	-	-	-	87	16	28	G1"
MXC 4250 E 60												
MXC 4235 E 90												
MXC 5280 E 45	1,928	418	653	1,684	461	825	-	-	87	16	28	
MXC 5260 E 60												
MXC 5240 E 90												
MXC 52105 E 45	1,928	418	653	1,684	461	825	-	-	87	19	35	
MXC 5280 E 60												
MXC 5255 E 90												
MXC 53125 E 45	2,700	418	653	2,444	461	840	802	802	100	19	35	
MXC 53100 E 60												
MXC 5370 E 90												
MXC 53160 E 45	2,700	418	653	2,444	461	840	802	802	100	19	35	
MXC 53120 E 60												
MXC 5385 E 90												
MXC 54185 E 45	3,122	418	653	2,846	461	739	702	702	110	25	42	
MXC 54140 E 60												
MXC 54100 E 90												
MXC 54210 E 45	3,522	418	662	3,246	461	840	802	802	110	25	42	
MXC 54160 E 60												
MXC 54115 E 90												
MXC 54235 E 45	3,122	511	662	2,846	576	739	702	702	110	25	42	
MXC 54175 E 60												
MXC 54120 E 90												
MXC 54270 E 45	3,522	511	662	3,246	576	840	802	802	110	25	50	
MXC 54200 E 60												
MXC 54140 E 90												
MXC 54300 E 45	3,522	511	712	3,246	576	840	802	802	100	25	54	
MXC 54220 E 60												
MXC 54155 E 90												
MXC 54330 E 45	3,522	511	812	3,246	576	840	802	802	110	25	54	
MXC 54250 E 60												
MXC 54170 E 90												
MXC 64400 E 45	3,522	515	965	3,246	576	840	802	802	110	28	54	
MXC 64300 E 60												
MXC 64200 E 90												
MXC 64470 E 45	3,522	598	865	3,198	657	828	790	790	134	28	54	
MXC 64350 E 60												
MXC 64250 E 90												
MXC 64540 E 45	3,522	598	965	3,246	657	840	802	802	110	32	54	
MXC 64400 E 60												
MXC 64270 E 90												





Maxcool

Sangchai Refrigeration Co.,Ltd.

88 Borommaratchachonnani Rd., Chim Phli, Taling Chan, Bangkok 10170

☎ : (+66)2-446-5656 📠 : (+66)2-446-5601

Product by



Your Refrigeration
& Electrical Solutions



www.sangchaigroup.com

REF-EVP-22MAY

