

Milwaukee®

**MX  
FUEL**

EQUIPMENT  
SYSTEM

**MX FUEL™**

**HANDHELD CORE DRILL  
& CORE DRILL STAND**



# ZERO EMISSIONS

MX FUEL™ not only provides all the power of corded and petrol-powered light equipment, but also produces ZERO EMISSIONS.

With the elimination of fumes and emissions with this new platform, this allows the user to improve their carbon footprint, as well as improving health and safety, as harmful fumes, noise and vibrations associated with the running of this light equipment are eliminated.

As a result, this increases productivity as this allows users to work indoors, outdoors and in enclosed spaces, without any petrol headaches. This new system not only saves the end user time with refuelling and starting up, but provides a cost saving on petrol consumption and engine maintenance.

*Milwaukee*

**MX  
FUEL**  
EQUIPMENT  
SYSTEM



**NO EMISSIONS**



**NO PULL START**



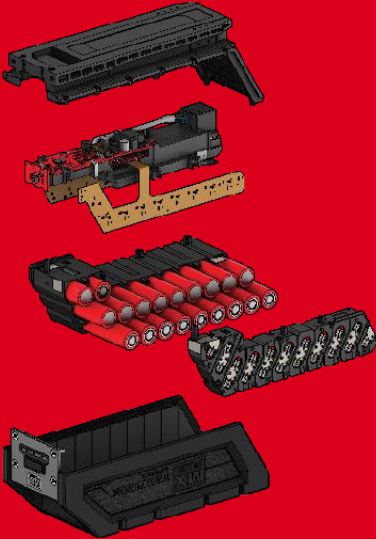
**NO MIXING  
PETROL AND OIL**



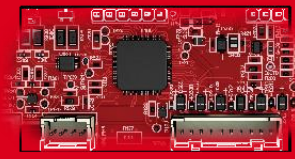
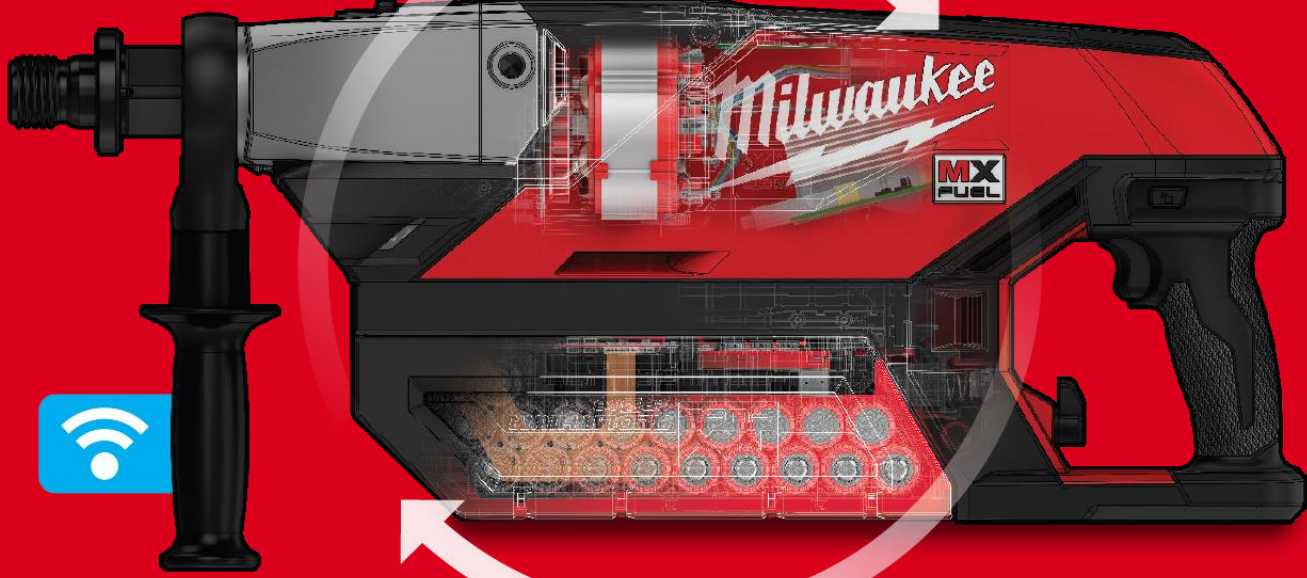
**NO ENGINE  
MAINTENANCE**

# MX FUEL™ HANDHELD CORE DRILL

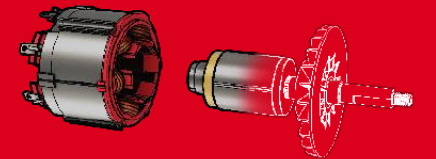
REDLITHIUM-ION



**1 REDLITHIUM™  
BATTERY PACK**



**2 REDLINK PLUS™  
INTELLIGENCE**



**3 POWERSTATE™  
BRUSHLESS  
MOTOR**

**SAFE  
HAND HELD CORING**

**POWER TO CORE  
152MM HOLES  
FROM START TO FINISH**

**FAST SETUP  
FOR VERSATILE CORING**



Nothing but **HEAVY DUTY.**™

# FEATURES & BENEFITS

## MX FUEL™ HANDHELD CORE DRILL



### SAFE HAND-HELD CORING

- Patented Clutch Design
- Auto-Stop Prevents Loss of Control During Bind Up

### POWER TO COMPLETE CHALLENGING APPLICATIONS

- Power to Core 152mm (6") Holes in Reinforced Concrete

### EASY CORING. ANYWHERE.

- On-Board Digital Level & Performance Gauge to Coach Users to Optimise Drilling Zone
- Dry Core & Wet Core Capability

### FAST SET-UP FOR MORE VERSATILE CORING

- Light-Weight & Vacuum Pump Ready

### USER DEMANDED FEATURES

- One-Key™ Tracking & Management





Nothing but **HEAVY DUTY.**™

# FEATURES & BENEFITS

## MX FUEL™ HANDHELD CORE DRILL

### MXFDCD150-0C SPECIFICATIONS

<b>PLATFORM</b>	MX FUEL™
<b>RPM</b>	Min: 800 / Max: 1,600
<b>BIT CAPACITY</b>	152.4 mm (6")
<b>SPINDLE SIZES</b>	1-1/4"-7 Spindle Thread
<b>LENGTH</b>	548 mm
<b>WEIGHT (Tool only)</b>	9.8 kg
<b>Tool only includes:</b> 1x MXFDCD150-0, 1x Quick Connect, 1x Spindle Adaptor, 1x Trigger Lock-On, 1x Side Handle, and Carrying Case (Battery and Charger sold separately)	



Nothing but **HEAVY DUTY.**™

# FEATURES & BENEFITS

## MX FUEL™ HANDHELD CORE DRILL

SPEED SELECTOR

SIDE HANDLE  
LOCATIONS

SPINDLE

WORKLIGHT

BATTERY LATCH  
LOCK & LEVER

SIDE HANDLE  
(NOT SHOWN)



COMMAND CENTRE

ARM BUTTON

TRIGGER LOCK  
& TRIGGER

HANDLE

WATER VALVE

WATER QUICK  
CONNECT



Nothing but **HEAVY DUTY.**™

# FEATURES & BENEFITS

## MX FUEL™ COMPACT CORE DRILL STAND



### ERGONOMICS

- Lightweight
- Integrated Carry Point

### VERSATILITY

- Tool-Free Angle Adjustment
- Vacuum Pump Ready

### EASE OF USE

- Tool-Free Removable Wheels
- Bubble Level
- Removable Carries for Easier Wall Mounting







**MX FUEL™**  
**HANDHELD CORE DRILL – TOOL ONLY**  
MXFDCD150-0C

Retail Price - \$2,499 Inc. GST



**MX FUEL™**  
**COMPACT CORE DRILL STAND**  
MXFDR150

Retail Price - \$1,399 Inc. GST

