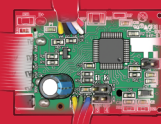


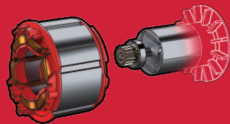


M18 FUEL

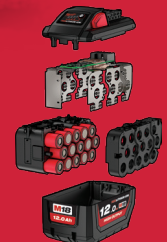
DRIVEN TO OUTPERFORM.



**REDLINK PLUS
INTELLIGENCE**



**POWERSTATE
BRUSHLESS MOTOR**



**RED LITHIUM™-ION
HIGH OUTPUT**

**REDLITHIUM-ION
BATTERY PACK**

M18 FCOS230
**M18 FUEL
230MM
CUT OFF
SAW**

**POWER
TO CUT
REINFORCED
CONCRETE**

**LIGHTER
THAN GAS**

**NO GAS
HEADACHES**



DRIVEN TO OUTPERFORM.

M18 FUEL is engineered for the most demanding tradesmen in the world. Delivering unrivaled performance in a compact structure, all M18 FUEL products feature three MILWAUKEE exclusive innovations - the POWERSTATE Brushless Motor, REDLITHIUM-ION Battery Pack and REDLINK PLUS Intelligence Hardware and Software - that deliver unmatched power, run-time and durability. Simply put, the M18 FUEL 230mm Cut-Off Saw delivers the power to cut reinforced concrete and a variety of other materials on the job without any of the gas headaches users are used to.

M18 FUEL

M18 REDLITHIUM-ION HIGH OUTPUT 12.0AH BATTERY

SEALED BATTERY COMPARTMENT

Enclosed to keep out water and debris

DUAL-ACTUATED TRIGGER

Prevents accidental tool start-ups



WRENCH & HEX KEY

On-board tools for
easy blade changes

WATER HOSE

Feeds water to both sides of blades to eliminate
dust when concrete cutting for OSHA compliance

OVERLOAD INDICATOR LIGHT

Turns on when user is pushing too hard,
coaching the user to optimal cutting speed

FULLY ADJUSTABLE BLADE GUARD

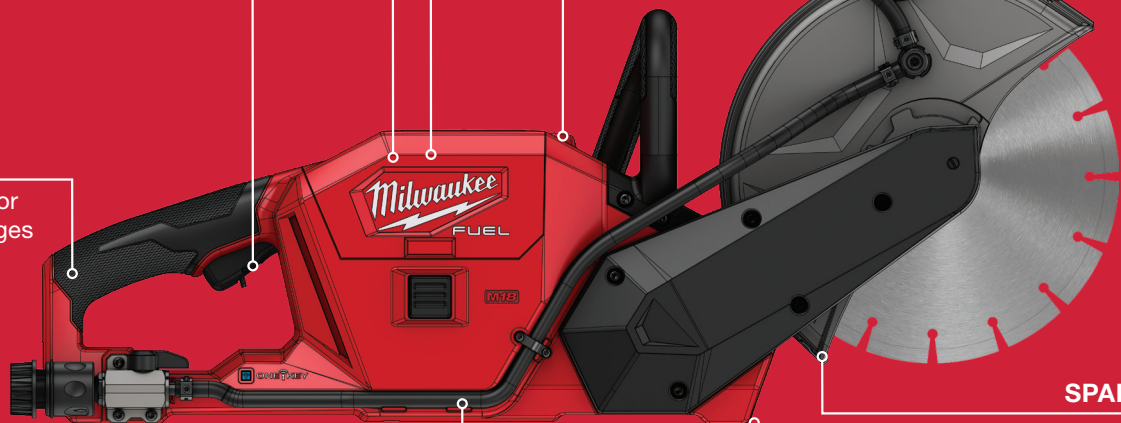
Allows user to easily
set the guard in the
optimal orientation
for their cut

SPARK GUARD

Catches sparks when
metal-cutting

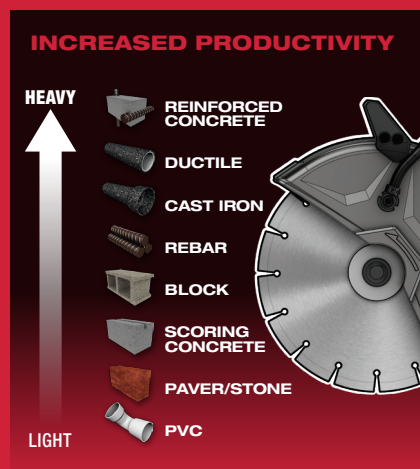
RAPIDSTOP BLADE BRAKE

Stops blade in under 3
seconds after the user
releases the trigger



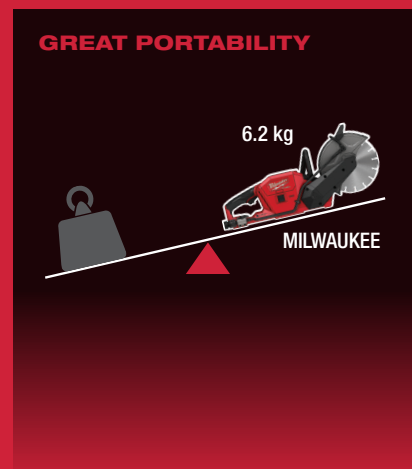
M18 FUEL 230MM CUT OFF SAW

POWER TO CUT REINFORCED CONCRETE



- Users have the power to cut most of the materials they will run into on the jobsite
- Extremely versatile application capability

LIGHTER THAN GAS



- Allows for a much more comfortable user experience
- Easier to use overhead or in tight spaces

NO GAS HEADACHES



- None of the frustrations of gas saws today
- Can be used indoors
- Starts instantly

COMPATIBLE WITH SWITCH TANK



- Compatible with M18 SWITCH TANK 15L Backpack Water Supply Kit - M18 BFPWS
- Quick Connect

SPECIFICATIONS

DESCRIPTION	SPECIFICATIONS
Blade Diameter	230 mm
Max. Cutting Depth	85 mm
Arbor Size	22.2 mm
RPM	6,600

DESCRIPTION	SPECIFICATIONS
Water Connection	Quick Connect
Load Indicator Light	Yes
Weight (w/12.0Ah battery)	6.2 kg

ACCESSORIES





MILWAUKEE TOOL

Milwaukee Electric Tool Corporation
BROOKFIELD, WI 53005
USA

Tel: +1 (262) 781-3600 • Fax: +1 (262) 790-6333

Milwaukee Asia Office
29/F, Tower 2, Kowloon Commerce Centre,
51 Kwai Cheong Road, Kwai Chung, Hong Kong
Tel: +852-2492-2181 • Fax: +852-2490-4778

Distributed by:

16/12/2019

All data incl. service and warranty conditions as well as product range are subject to change without notice.
Pictures not binding. No liability for printing errors or mistakes. © 2019 Milwaukee Electric Tool Corporation.
All trademarks are owned by Techtronic Cordless GP unless otherwise stated.

www.milwaukeetool.asia