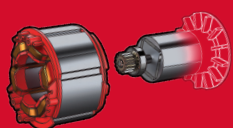


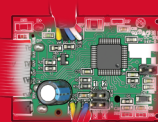


M12 FUEL™

DRIVEN TO OUTPERFORM.™



POWERSTATE™
BRUSHLESS MOTOR



REDLINK PLUS
INTELLIGENCE



REDLITHIUM-ION
BATTERY PACK

M12 FHS
M12 FUEL
HATCHET
PRUNING
SAW

UNMATCHED
CONTROL
& ACCESS

POWER
TO CUT
76MM
HARDWOODS

UPTO
150 CUTS
PER CHARGE



DRIVEN TO OUTPERFORM.

M12 FUEL is engineered for the most demanding tradesmen in the world. M12 FUEL delivers unrivaled performance in a compact structure and features three MILWAUKEE exclusive innovations - the POWERSTATE Brushless Motor, REDLITHIUM-ION Battery Pack and REDLINK PLUS Intelligence Hardware and Software - that deliver unmatched power, run-time and durability.

M12 FUEL

POWERSTATE BRUSHLESS MOTOR

- Delivers faster installation time by running down the fastener via the motor

FULL HOUSE CHAIN

- Delivers clean cuts and less vibration

VARIABLE SPEED TRIGGER

- Allows for full control over the power range

EASY ACCESS CHAIN TENSIONER

- For quick adjustments to chain tension

METAL BUCKING SPIKES

- Allows for increased leverage during applications

AUTOMATIC OILER

- For ease of use and proper chain lubrication

HANG HOLE

- For hanging during storage

ONBOARD SCRENCH STORAGE

- Keeps screncch accessible at all times



M12 FUEL HATCHET PRUNING SAW

UNMATCHED
CONTROL
& ACCESS



- Compact design delivers better accessibility and maneuverability in tight areas
- Tool with M12 REDLITHIUM-ION 6.0Ah Battery weighs less than 2.3kg

POWER TO CUT
76MM
HARDWOODS



- POWERSTATE Brushless Motor delivers the torque to complete cuts in demanding materials
- Faster Cutting than manual hand saws
- M12 FUEL Technology delivers instant throttle response

UP TO
150 CUTS
PER CHARGE



- With an M12 REDLITHIUM-ION 6.0Ah Battery in 2x4" Pine



SPECIFICATIONS

DESCRIPTION	SPECIFICATIONS
No Load Chain Speed	5 m/s
Maximum Bar Length	152mm (6")
Usable Cutting Length	140mm (5.5")

DESCRIPTION	SPECIFICATIONS
Chain Oil Tank Capacity	50 mL
Weight (w/6.0Ah battery)	2.3 kg

ACCESSORIES



152MM (6")
SAW CHAIN
49-16-2732



152MM (6")
GUIDE BAR
49-16-2733



MILWAUKEE TOOL

Milwaukee Electric Tool Corporation
BROOKFIELD, WI 53005
USA

Tel: +1 (262) 781-3600 • Fax: +1 (262) 790-6333

Milwaukee Asia Office
29/F, Tower 2, Kowloon Commerce Centre,
51 Kwai Cheong Road, Kwai Chung, Hong Kong
Tel: +852-2492-2181 • Fax: +852-2490-4778

Distributed by:

8/9/2020

All data incl. service and warranty conditions as well as product range are subject to change without notice.
Pictures not binding. No liability for printing errors or mistakes. © 2020 Milwaukee Electric Tool Corporation.
All trademarks are owned by Techtronic Cordless GP unless otherwise stated.

www.milwaukeetool.asia