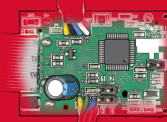


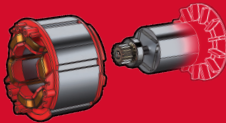


# M12 FUEL™

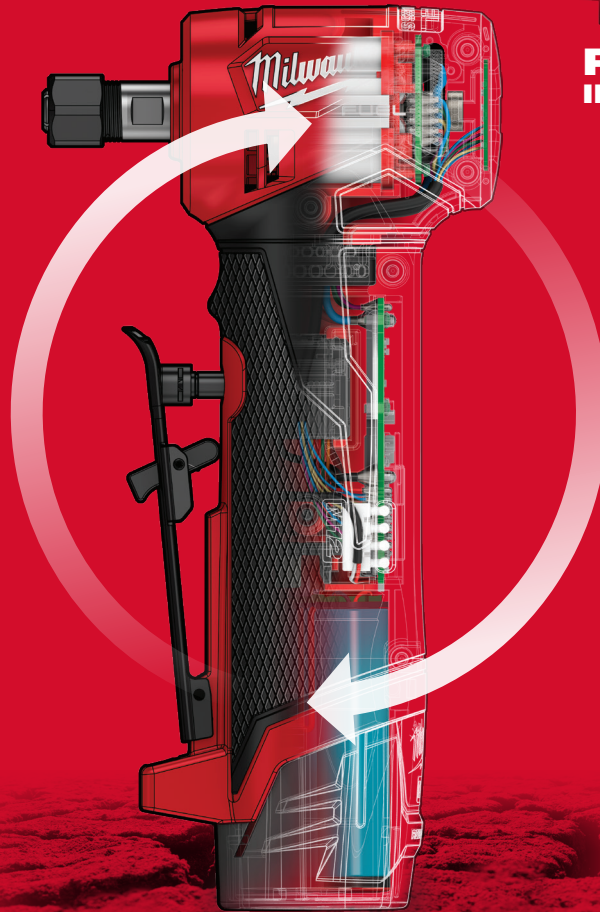
DRIVEN TO OUTPERFORM.™



**REDLINK PLUS  
INTELLIGENCE**



**POWERSTATE  
BRUSHLESS MOTOR**



**REDLITHIUM-ION  
BATTERY PACK**

M12 FDGA  
**M12 FUEL  
RIGHT  
ANGLE DIE  
GRINDER**

**MORE  
POWER**  
THAN PNEUMATIC

**4-MODE  
SPEED  
CONTROL**

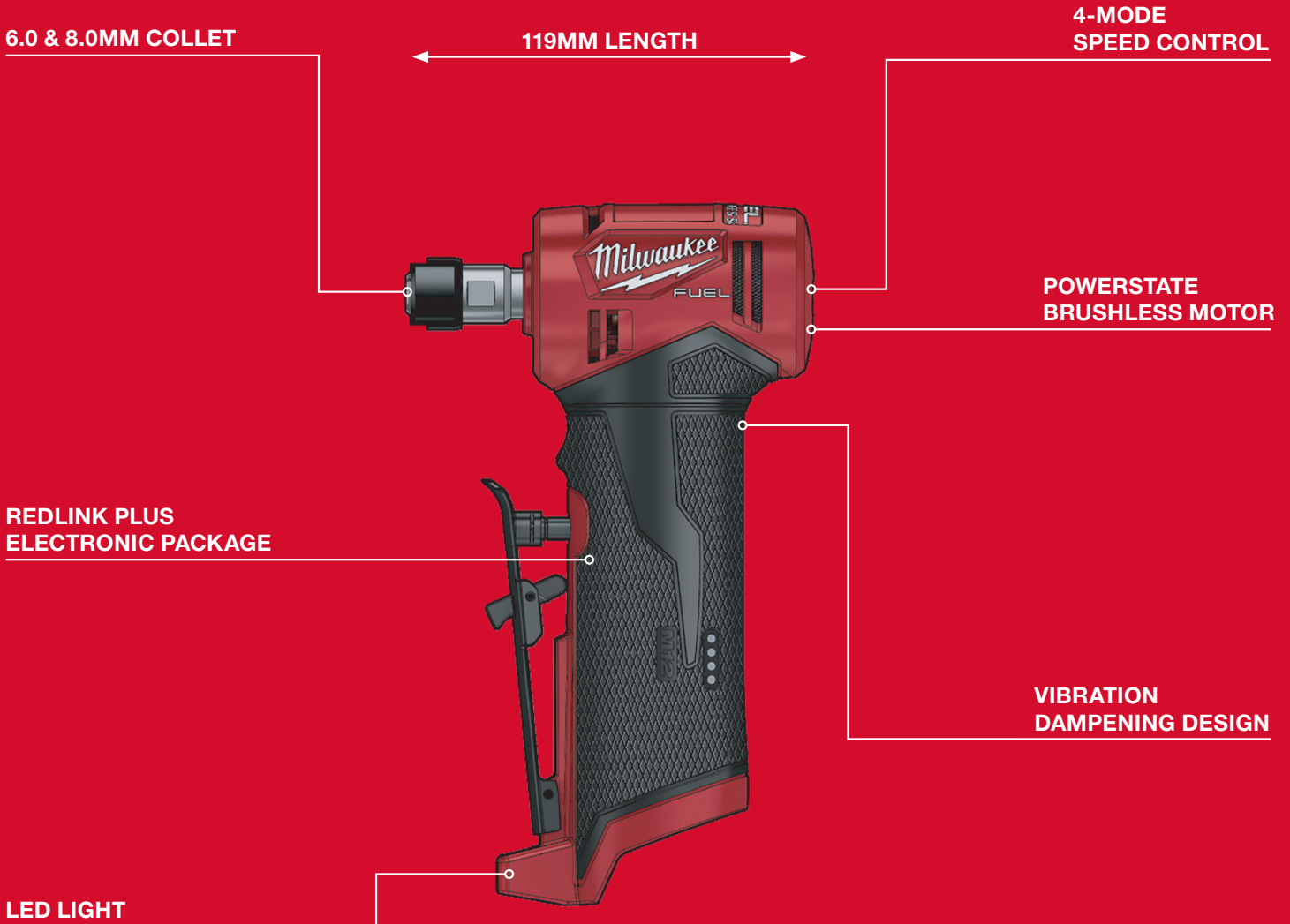
**GREAT  
MOBILITY  
& ACCESS**



# DRIVEN TO OUTPERFORM.

M12 FUEL is engineered for the most demanding tradesmen in the world. M12 FUEL delivers unrivaled performance in a compact structure and features three MILWAUKEE exclusive innovations - the POWERSTATE Brushless Motor, REDLITHIUM-ION Battery Pack and REDLINK PLUS Intelligence Hardware and Software - that deliver unmatched power, run-time and durability.

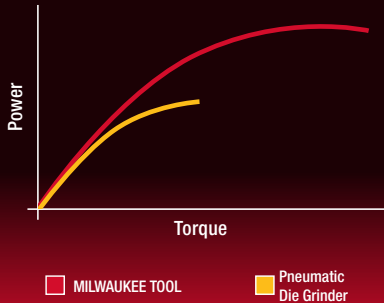
## M12 FUEL™



# M12 FUEL RIGHT ANGLE DIE GRINDER

## MORE POWER THAN PNEUMATIC

**GENERATES 0.3 HP MOTOR OUTPUT**



- More powerful than pneumatic 0.25 HP die grinders

## 4-MODE SPEED CONTROL

**OPTIMIZED FOR MOST COMMON ACCESSORIES**

**RPM MODES & EXAMPLE ATTACHMENTS**

<b>1</b>	<b>10,000 RPM</b> Control for Delicate Applications	
<b>2</b>	<b>15,000 RPM</b> Wire Wheel Brush	
<b>3</b>	<b>20,000 RPM</b> Bristle Disc	
<b>4</b>	<b>24,500 RPM</b> Non-Woven Disc Cut Off Disc Abrasive Disc	

- Dial in the right max RPM for safer operation
- Variable speed trigger

## GREAT MOBILITY & ACCESS

**SAVES TIME. GREAT PORTABILITY.**

**NO HOSES OR COMPRESSORS**



**COMPACT TOOL SIZE**



- No air hoses, compressors, or daily maintenance
- Increased cost savings over pneumatic power
- Compact tool size allows access in tight spaces

## ACCESSORY COMPATIBILITY

	Carbide Burr	Roloc Abrasive Disc	Flap Wheel	Wire Cup	Wire Wheel*	Non-Woven Pad	Cut-Off Wheel**	Bristle Disc*
1"	✓	✓	✓	✓	✓	✓	N/A	✓
2"	N/A	✓	✓	✗	✓	✓	✓	✓
3"	N/A	✓	✗	✗	✗	✓	✗	✗

\*For best performance, let the tool do the work and apply appropriate pressure as necessary  
\*\*For best performance, use high quality and balanced accessories (such as Milwaukee or Pferd) while applying appropriate pressure as necessary

## SPECIFICATIONS

DESCRIPTION	SPECIFICATIONS
Collet Size	6.0 mm & 8.0 mm
Length	119 mm

DESCRIPTION	SPECIFICATIONS
4-Mode RPM Control	10,000 / 15,000 / 20,000 / 24,500 rpm
Weight (w/3.0Ah battery)	0.8 kg



Nothing but **HEAVY DUTY**

## MILWAUKEE TOOL

Milwaukee Electric Tool Corporation  
BROOKFIELD, WI 53005  
USA

Tel: +1 (262) 781-3600 • Fax: +1 (262) 790-6333

Milwaukee Asia Office  
29/F, Tower 2, Kowloon Commerce Centre,  
51 Kwai Cheong Road, Kwai Chung, Hong Kong  
Tel: +852-2492-2181 • Fax: +852-2490-4778

Distributed by:

16/12/2019

All data incl. service and warranty conditions as well as product range are subject to change without notice. Pictures not binding. No liability for printing errors or mistakes. © 2019 Milwaukee Electric Tool Corporation. All trademarks are owned by Techtronic Cordless GP unless otherwise stated.

[www.milwaukeetool.asia](http://www.milwaukeetool.asia)