

# JW FITTINGS





# JW FITTINGS

PRODUCT TO DIN & BRITISH STANDARDS



ISO9001



KG



QAS



IAPMO



JIS



NSF



DVGW



KITE



AENOR

JW FITTINGS

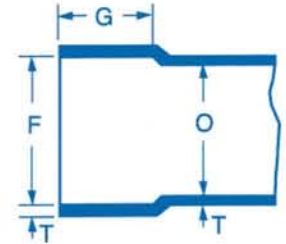
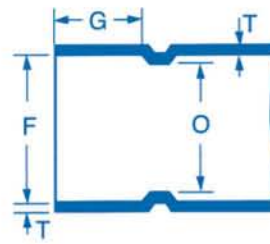
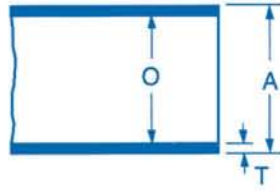
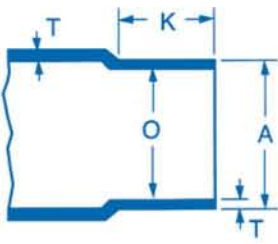


JW FIT PRODUCT TO DIN & BRITISH STANDARDS FITTINGS

For over 20 years, JW have grown continuously under the patronage of domestic and foreign customers. Recently, we have been operating mass production system by completing new manufacturing facilities and quality management system since acquiring ISO 9001 Certificate of approval.

JW is capable of producing small quantity in various ranges while also meeting the wide range of specifications including ANSI, BS, DIN, JIS and AS Standards for ACR use.

As quality, price, delivery are the keys to customer satisfaction, we will continuously devote ourselves to incessant technical development, constructing positive minds, and working as a team to provide the best service possible.



MALE END (FTG)

FEMALE END (c)

Nominal Size		Joint Ends										Metal Thickness (Min) T (mm)	Inside Diameter (Min) O (mm)
		Male End					Female End						
		Outside Diameter A (mm)	Average Tolerance (mm)	Actual Min (mm)	O.D. Max (mm)	Length (Min) K (mm)	Inside Diameter F (mm)	Average Tolerance (mm)	Actual Min (mm)	I.D. Max (mm)	Length (Min) G (mm)		
1/8	(6)	6.34	±0.03	6.28	6.40	7.9	6.45	±0.03	6.39	6.51	6.4	0.50	4.6
1/4	(8)	9.52		9.46	9.58	9	9.62		9.56	9.68	8	0.60	6
3/8	(10)	12.70		12.63	12.77	10	12.81		12.74	12.88	9	0.70	9
1/2	(15)	15.88		15.79	15.97	12	16.00		15.92	16.08	11	0.80	12
5/8	(19)	19.05		18.95	19.15	16	19.19		19.09	19.29	15	0.80	14
3/4	(20)	22.22	22.12	22.32	18	22.36	22.26	22.46	17	0.90	17		
1	(25)	28.58	±0.04	28.45	28.71	22	28.75	±0.04	28.63	28.87	21	1.00	23
1 1/4	(32)	34.92		34.77	35.07	25	35.11		34.97	35.25	24	1.20	28
1 1/2	(40)	41.28	±0.05	41.09	41.47	28	41.50	±0.05	41.34	41.66	27	1.30	34
2	(50)	53.98		53.78	54.18	34	54.22		54.04	54.40	33	1.50	45
2 1/2	(65)	66.68		66.44	66.92	38	66.96		66.74	67.18	37	1.70	55
3	(80)	79.38		79.14	79.62	43	79.66		79.44	79.88	42	2.00	67
4	(100)	104.78	104.48	105.08	55	105.12	104.84	105.40	54	2.40	90		
5	(125)	130.18	±0.08	129.84	130.52	69	130.55	±0.08	130.21	130.89	67	2.80	119
6	(150)	155.58		155.19	155.97	82	156.00		155.61	156.39	78	3.10	145
8	(200)	206.38		205.86	206.90	104	207.27		206.75	207.79	100	4.50	192
10	(250)	257.18	±0.35	256.48	257.88	115	259.06	±0.35	258.36	259.76	110	5.00	235

c : Solder joint fitting end made to receive copper tube diameter (Female)

Ftg : Solder joint fitting end made to copper tube diameter (Male)

F : Internal ANSI Standard Taper Pipe Thread (Female , NPTI)

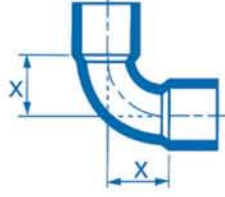
M : External ANSI Standard Taper Pipe Thread (Male , NPTE)

## ELBOW

### 90° ELBOW

L - 1000

90EA (C x C)

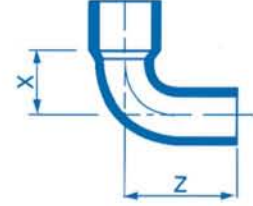


Nominal Size		Pkg. Qty.	Figure	
Inch	(mm)		X (mm)	
1/4	(8)	500/25	10.0	
3/8	(10)	400/25	11.0	
1/2	(15)	500/25	13.5	
5/8	(19)	300/25	14.5	
3/4	(20)	200/25	20.0	
1	(25)	100	20.0	
1 1/4	(32)	50	30.0	
1 1/2	(40)	30	30.0	
2	(50)	15	38.0	
2 1/2	(65)	20	50.0	
3	(80)	13	60.0	
4	(100)	6	80.0	
5	(125)	6	90.0	
6	(150)	5	120.0	
8	(200)	1	150.0	
1/8	(6)	500/25	8.0	
10	(250)	1	185.0	

### 90° ELBOW

L - 1100

90EB (Ftg x C)



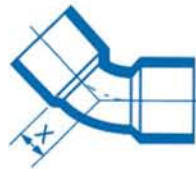
Nominal Size		Pkg. Qty.	Figure	
Inch	(mm)		X (mm)	Z (mm)
1/4	(8)	500	10.0	18.0
3/8	(10)	400	11.0	19.0
1/2	(15)	500	12.5	25.5
5/8	(19)	300	14.5	30.5
3/4	(20)	200	17.5	38.0
1	(25)	100	22.5	42.0
1 1/4	(32)	50	29.5	55.0
1 1/2	(40)	30	34.5	58.0
2	(50)	15	44.5	72.0
2 1/2	(65)	20	52.5	88.0
3	(80)	13	59.0	103.0
4	(100)	6	85.0	135.0
5	(125)	-	97.0	159.0
6	(150)	-	115.0	202.0
8	(200)	-	160.0	254.0

### 45° ELBOW

\*22.5 ELBOW

L - 1600

45EA (C x C)

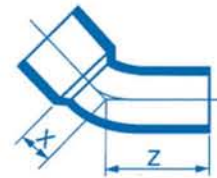


Nominal Size		Pkg. Qty.	Figure	
Inch	(mm)		X (mm)	
1/4	(8)	500	5.0	
3/8	(10)	400	6.5	
1/2	(15)	300/25	7.5	
5/8	(19)	150/25	9.0	
3/4	(20)	100/20	11.0	
1	(25)	100	14.0	
1 1/4	(32)	50	15.5	
1 1/2	(40)	30	18.0	
2	(50)	15	22.0	
2 1/2	(65)	20	28.0	
3	(80)	15	30.5	
4	(100)	6	43.0	
5	(125)	4	56.0	
6	(150)	5	59.5	
8	(200)	1	72.5	
10	(250)	1	92.0	

### 45° ELBOW

L - 1700

45EB (Ftg x C)

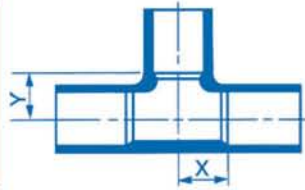


Nominal Size		Pkg. Qty.	Figure	
Inch	(mm)		X (mm)	Z (mm)
1/4	(8)	400	3.0	14.0
3/8	(10)	300	3.5	16.5
1/2	(15)	200	4.5	19.5
5/8	(19)	100	5.0	25.0
3/4	(20)	50	6.5	29.0
1	(25)	30	7.5	36.0
1 1/4	(32)	20	9.0	40.5
1 1/2	(40)	10	10.5	46.0
2	(50)	5	15.0	56.0
2 1/2	(65)	20	19.0	66.0
3	(80)	15	23.0	73.5
4	(100)	6	38.0	98.0
5	(125)	-	46.0	125.0
6	(150)	-	67.0	141.5
8	(200)	-	75.0	176.5

### TEE - EQUAL - REDUCER

T - 3000

TA (C x C x C)



Nomlnal inch	Size (mm)	Pkg. Qty.	Figure	
			X (mm)	Y (mm)
1/4 x 1/4	(8 x 8)	500/25	5.5	5.5
3/8 x 3/8	(10 x 10)	300/25	7.5	7.5
3/8 x 1/4	(10 x 8)	300/25	5.5	7.5
1/2 x 1/2	(15 x 15)	300/25	9.0	9.0
1/2 x 3/8	(15 x 10)	300/25	7.5	9.0
5/8 x 5/8	(19 x 19)	200/25	10.5	10.5
5/8 x 1/2	(19 x 15)	200/25	9.0	10.5
3/4 x 3/4	(20 x 20)	120/20	12.0	12.5
3/4 x 5/8	(20 x 19)	120/20	10.5	12.5
3/4 x 1/2	(20 x 15)	150/10	9.0	12.5
1 x 1	(25 x 25)	60/10	15.5	15.5
1 x 3/4	(25 x 20)	60/10	12.0	15.5
1 x 5/8	(25 x 19)	80/10	10.5	15.5
1 x 1/2	(25 x 15)	100/10	9.0	15.5
1 1/4 x 1 1/4	(32 x 32)	30	19.0	19.0
1 1/4 x 1	(32 x 25)	40	15.5	19.0
1 1/4 x 3/4	(32 x 20)	50	12.5	19.0
1 1/4 x 5/8	(32 x 19)	50	10.5	19.0
1 1/4 x 1/2	(32 x 15)	50	9.0	19.0
1 1/2 x 1 1/2	(40 x 40)	20	22.5	22.5
1 1/2 x 1 1/4	(40 x 32)	20	19.0	22.5
1 1/2 x 1	(40 x 25)	30	15.5	22.5
1 1/2 x 3/4	(40 x 20)	35	12.5	22.5
1 1/2 x 5/8	(40 x 19)	35	10.5	22.5
1 1/2 x 1/2	(40 x 15)	40	9.0	22.5
2 x 2	(50 x 50)	10	29.0	29.0
2 x 1 1/2	(50 x 40)	10	22.5	29.0
2 x 1 1/4	(50 x 32)	13	19.0	29.0
2 x 1	(50 x 25)	15	15.5	29.0
2 x 3/4	(50 x 20)	15	12.5	29.0
2 x 5/8	(50 x 19)	20	11.0	29.0
2 x 1/2	(50 x 15)	20	9.5	29.0
2 1/2 x 2 1/2	(65 x 65)	13	35.5	35.5
2 1/2 x 2	(65 x 50)	15	29.0	35.5
2 1/2 x 1 1/2	(65 x 40)	20	22.5	35.5
2 1/2 x 1 1/4	(65 x 32)	20	19.0	35.5
2 1/2 x 1	(65 x 25)	25	15.5	35.5
2 1/2 x 3/4	(65 x 20)	25	12.5	35.5
2 1/2 x 5/8	(65 x 19)	25	11.0	35.5
2 1/2 x 1/2	(65 x 15)	25	9.5	35.5
3 x 3	(80 x 80)	10	42.0	42.0

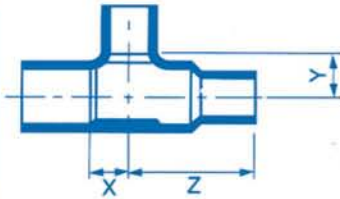
Nomlnal inch	Size (mm)	Pkg. Qty.	Figure	
			X (mm)	Y (mm)
3 x 2 1/2	(80 x 65)	10	35.5	42.0
3 x 2	(80 x 50)	13	29.0	42.0
3 x 1 1/2	(80 x 40)	13	22.5	42.0
3 x 1 1/4	(80 x 32)	13	19.0	42.0
3 x 1	(80 x 25)	15	5.5	42.0
3 x 3/4	(80 x 20)	15	12.5	42.0
3 x 5/8	(80 x 19)	15	11.0	42.0
3 x 1/2	(80 x 15)	10	9.5	42.0
4 x 4	(100 x 100)	5	55.0	55.5
4 x 3	(100 x 80)	5	42.0	55.5
4 x 2 1/2	(100 x 65)	5	35.5	55.5
4 x 2	(100 x 50)	6	29.0	55.5
4 x 1 1/2	(100 x 40)	6	23.0	55.5
4 x 1 1/4	(100 x 32)	8	19.5	55.5
4 x 1	(100 x 25)	8	16.0	55.5
4 x 3/4	(100 x 20)	8	13.0	55.5
4 x 5/8	(100 x 19)	8	11.5	55.5
4 x 1/2	(100 x 15)	5	10.0	55.5
5 x 5	(125 x 125)	2	68.0	68.5
5 x 4	(125 x 100)	3	55.5	68.5
5 x 3	(125 x 80)	3	42.0	68.5
5 x 2 1/2	(125 x 65)	4	35.5	68.5
5 x 2	(125 x 50)	4	29.0	68.5
5 x 1 1/2	(125 x 40)	4	23.0	68.5
5 x 1 1/4	(125 x 32)	4	20.0	68.5
5 x 1	(125 x 25)	4	17.0	68.5
6 x 6	(150 x 150)	2	81.5	81.5
6 x 5	(150 x 125)	2	68.5	81.5
6 x 4	(150 x 100)	2	55.5	81.5
6 x 3	(150 x 80)	2	42.0	81.5
6 x 2 1/2	(150 x 65)	3	36.0	81.5
6 x 2	(150 x 50)	3	30.0	81.5
8 x 8	(200 x 200)	1	108.0	109.0
8 x 6	(200 x 150)	1	81.5	109.0
8 x 5	(200 x 125)	1	68.5	109.0
8 x 4	(200 x 100)	1	55.5	109.0
8 x 3	(200 x 80)	1	43.0	109.0
8 x 2 1/2	(200 x 65)	1	37.0	109.0
8 x 2	(200 x 50)	1	31.0	109.0
1/8 x 1/8	(6 x 6)	500	4.0	4.0
10 x 10	(250 x 250)	1	109.0	136.0

TEE

### TEE - REDUCER

T - 3200

T3B (C x Ftg x C)



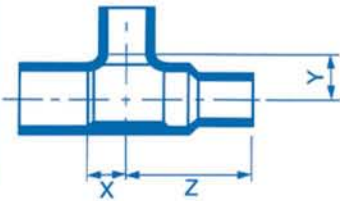
Nominal Size		Pkg. Qty.	Figure		
inch	(mm)		X (mm)	Y (mm)	Z (mm)
5/8 x 1/2 x 1/2	(19 x 15 x 15)	200	10.0	12.5	25.0
3/4 x 1/2 x 1/2	(20 x 15 x 15)	150	11.0	13.5	34.0

Nominal Size		Pkg. Qty.	Figure		
inch	(mm)		X (mm)	Y (mm)	Z (mm)
1 x 3/4 x 3/4	(25 x 20 x 20)	60	13.0	20.0	40.5
1 x 3/4 x 5/8	(25 x 20 x 19)	60	10.5	18.5	43.5

### TEE - REDUCER

T - 3100

T3A (C x C x C)



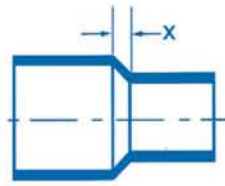
Nominal Size		Pkg. Qty.	Figure		
inch	(mm)		X (mm)	Y (mm)	Z (mm)
1/2 x 3/8 x 3/8	(15 x 10 x 10)		7.0	8.5	25.0
3/4 x 1/2 x 1/2	(20 x 15 x 15)		8.5	11.5	32.0
3/4 x 1/2 x 3/4	(20 x 15 x 20)		11.5	11.5	32.5
1 x 1/2 x 1/2	(25 x 15 x 15)		8.5	15.0	37.0
1 x 1/2 x 3/4	(25 x 15 x 20)		12.0	15.0	40.0
1 x 1/2 x 1	(25 x 15 x 25)		15.0	15.0	43.5
1 x 3/4 x 1/2	(25 x 20 x 15)		8.5	15.0	38.5
1 x 3/4 x 3/4	(25 x 20 x 20)		12.0	15.0	41.5
1 x 3/4 x 1	(25 x 20 x 25)		15.0	15.0	44.0
1 1/4 x 1/2 x 1/2	(32 x 15 x 15)		9.0	18.0	43.0
1 1/4 x 1/2 x 1 1/4	(32 x 15 x 32)		18.0	18.0	52.0
1 1/4 x 3/4 x 1/2	(32 x 20 x 15)		9.0	18.0	44.0
1 1/4 x 3/4 x 3/4	(32 x 20 x 20)		12.0	18.0	47.0
1 1/4 x 3/4 x 1	(32 x 20 x 25)		15.0	18.0	50.5
1 1/4 x 3/4 x 1 1/4	(32 x 20 x 32)		18.0	18.0	53.5
1 1/4 x 1 x 1/2	(32 x 25 x 15)		9.0	18.0	43.5
1 1/4 x 1 x 3/4	(32 x 25 x 20)		12.0	18.0	46.5
1 1/4 x 1 x 1	(32 x 25 x 25)		15.0	18.0	50.0
1 1/4 x 1 x 1 1/4	(32 x 25 x 32)		18.0	18.0	53.0
1 1/2 x 1/2 x 1	(40 x 15 x 25)		15.0	21.5	49.0
1 1/2 x 1/2 x 1 1/2	(40 x 15 x 40)		21.5	21.5	60.0
1 1/2 x 3/4 x 1/2	(40 x 20 x 15)		9.0	21.0	48.5
1 1/2 x 3/4 x 3/4	(40 x 20 x 20)		12.0	21.0	51.5
1 1/2 x 3/4 x 1	(40 x 20 x 25)		15.0	21.5	55.0
1 1/2 x 3/4 x 1 1/4	(40 x 20 x 32)		18.0	21.5	58.0
1 1/2 x 3/4 x 1 1/2	(40 x 20 x 40)		21.5	21.5	61.5
1 1/2 x 1 x 1/2	(40 x 25 x 15)		9.0	21.0	48.0
1 1/2 x 1 x 3/4	(40 x 25 x 20)		12.0	21.0	51.0
1 1/2 x 1 x 1	(40 x 25 x 25)		15.0	21.5	54.5
1 1/2 x 1 x 1 1/4	(40 x 25 x 32)		18.0	21.5	57.5
1 1/2 x 1 x 1 1/2	(40 x 25 x 40)		21.5	21.5	61.0
1 1/2 x 1 1/4 x 1/2	(40 x 32 x 15)		9.0	21.0	45.0
1 1/2 x 1 1/4 x 3/4	(40 x 32 x 20)		12.0	21.0	48.0
1 1/2 x 1 1/4 x 1	(40 x 32 x 25)		15.0	21.5	51.5
1 1/2 x 1 1/4 x 1 1/4	(40 x 32 x 32)		18.0	21.5	54.5
1 1/2 x 1 1/4 x 1 1/2	(40 x 32 x 40)		21.5	21.5	58.0

Nominal Size		Pkg. Qty.	Figure		
inch	(mm)		X (mm)	Y (mm)	Z (mm)
2 x 1/2 x 2	(50 x 15 x 50)		27.5	27.5	76.5
2 x 3/4 x 2	(50 x 20 x 50)		27.5	27.5	78.0
2 x 1 x 1	(50 x 25 x 25)		15.0	27.5	64.5
2 x 1 x 1 1/2	(50 x 25 x 40)		21.5	27.5	71.0
2 x 1 x 2	(50 x 25 x 50)		27.5	27.5	77.5
2 x 1 1/4 x 3/4	(50 x 32 x 20)		12.0	27.5	58.0
2 x 1 1/4 x 1	(50 x 32 x 25)		15.0	27.5	61.5
2 x 1 1/4 x 1 1/4	(50 x 32 x 32)		18.0	27.5	64.5
2 x 1 1/4 x 1 1/2	(50 x 32 x 40)		21.5	27.5	68.0
2 x 1 1/4 x 2	(50 x 32 x 50)		27.5	27.5	74.5
2 x 1 1/2 x 3/4	(50 x 40 x 20)		12.0	27.5	56.5
2 x 1 1/2 x 1	(50 x 40 x 25)		15.0	27.5	60.0
2 x 1 1/2 x 1 1/4	(50 x 40 x 32)		18.0	27.5	63.0
2 x 1 1/2 x 1 1/2	(50 x 40 x 40)		21.5	27.5	66.5
2 x 1 1/2 x 2	(50 x 40 x 50)		27.5	27.5	73.0
2 1/2 x 3/4 x 2 1/2	(65 x 20 x 65)		35.0	35.0	96.0
2 1/2 x 1 x 2 1/2	(65 x 25 x 65)		35.0	35.0	95.5
2 1/2 x 1 1/4 x 1 1/4	(65 x 32 x 32)		18.0	35.0	73.5
2 1/2 x 1 1/4 x 2 1/2	(65 x 32 x 65)		35.0	35.0	92.5
2 1/2 x 1 1/2 x 2 1/2	(65 x 40 x 65)		35.0	35.0	91.0
2 1/2 x 2 x 1/2	(65 x 50 x 15)		9.0	35.0	58.5
2 1/2 x 2 x 3/4	(65 x 50 x 20)		12.0	35.0	64.5
2 1/2 x 2 x 1	(65 x 50 x 25)		15.0	35.0	65.5
2 1/2 x 2 x 1 1/4	(65 x 50 x 32)		18.0	35.0	69.5
2 1/2 x 2 x 1 1/2	(65 x 50 x 40)		21.5	35.0	73.0
2 1/2 x 2 x 2	(65 x 50 x 50)		27.5	35.0	80.0
2 1/2 x 2 x 2 1/2	(65 x 50 x 65)		35.0	35.0	88.5
3 x 2 x 2	(80 x 50 x 50)		27.5	41.0	89.0
3 x 2 x 3	(80 x 50 x 80)		41.0	41.0	105.5
3 x 2 1/2 x 3/4	(80 x 65 x 20)		12.0	41.0	67.5
3 x 2 1/2 x 1 1/2	(80 x 65 x 40)		21.5	41.0	76.0
3 x 2 1/2 x 2	(80 x 65 x 50)		27.5	41.0	83.0
3 x 2 1/2 x 2 1/2	(80 x 65 x 65)		35.0	41.0	91.5
3 x 2 1/2 x 3	(80 x 60 x 80)		41.0	41.0	99.0
4 x 3 x 4	(100 x 80 x 100)		54.0	54.0	129.0
4 x 3 x 3	(100 x 80 x 80)		41.0	54.0	113.5

### REDUCER

R - 4000

RA (C x C)



Nomlnal Inch	Size (mm)	Pkg. Qty.	Figure X (mm)
3/8 x 1/4	(10 x 8)	300	2.5
1/2 x 3/8	(15 x 10)	150 / 25	2.5
5/8 x 1/2	(19 x 15)	100	2.5
3/4 x 5/8	(20 x 19)	200 / 25	2.5
3/4 x 1/2	(20 x 15)	200 / 25	4.5
1 x 3/4	(25 x 20)	100	4.5
1 x 5/8	(25 x 19)	100	7.0
1 x 1/2	(25 x 15)	100	9.5
1 1/4 x 1	(32 x 25)	100	4.5
1 1/4 x 3/4	(32 x 20)	100	9.5
1 1/4 x 5/8	(32 x 19)	100	11.5
1 1/4 x 1/2	(32 x 15)	100	14.0
1 1/2 x 1 1/4	(40 x 32)	70	4.5
1 1/2 x 1	(40 x 25)	70	9.5
1 1/2 x 3/4	(40 x 20)	70	14.0
1 1/2 x 5/8	(40 x 19)	70	16.5
1 1/2 x 1/2	(40 x 15)	70	19.0
2 x 1 1/2	(50 x 40)	50	9.5
2 x 1 1/4	(50 x 32)	50	14.0
2 x 1	(50 x 25)	50	19.0
2 x 3/4	(50 x 20)	50	16.5
2 x 5/8	(50 x 19)	50	18.0
2 x 1/2	(50 x 15)	50	19.5
2 1/2 x 2	(65 x 50)	30	9.5
2 1/2 x 1 1/2	(65 x 40)	30	19.0
2 1/2 x 1 1/4	(65 x 32)	30	23.5
2 1/2 x 1	(65 x 25)	30	19.5
2 1/2 x 3/4	(65 x 20)	30	23.0
2 1/2 x 5/8	(65 x 19)	30	24.5
2 1/2 x 1/2	(65 x 15)	30	26.5
3 x 2 1/2	(80 x 65)	15	9.5
3 x 2	(80 x 50)	20	19.0
3 x 1 1/2	(80 x 40)	20	28.0
3 x 1 1/4	(80 x 32)	20	23.0
3 x 1	(80 x 25)	20	30.3
3 x 3/4	(80 x 20)	20	29.5
3 x 5/8	(80 x 19)	20	31.5
3 x 1/2	(80 x 15)	20	37.9
4 x 3	(100 x 80)	20	19.0
4 x 2 1/2	(100 x 65)	20	28.0

Nomlnal Inch	Size (mm)	Pkg. Qty.	Figure X (mm)
4 x 2	(100 x 50)	20	37.5
4 x 1 1/2	(100 x 40)	20	33.0
4 x 1 1/4	(100 x 32)	20	36.0
4 x 1	(100 x 25)	20	39.5
4 x 3/4	(100 x 20)	20	43.0
4 x 5/8	(100 x 19)	20	44.5
4 x 1/2	(100 x 15)	20	53.1
5 x 4	(125 x 100)	9	19.0
5 x 3	(125 x 80)	10	37.5
5 x 2 1/2	(125 x 65)	10	47.0
5 x 2	(125 x 50)	10	39.5
5 x 1 1/2	(125 x 40)	10	46.0
5 x 1 1/4	(125 x 32)	10	49.5
5 x 1	(125 x 25)	12	52.5
5 x 3/4	(125 x 20)	12	56.0
5 x 5/8	(125 x 19)	12	57.5
5 x 1/2	(125 x 15)	12	59.5
6 x 5	(150 x 125)	4	19.0
6 x 4	(150 x 100)	4	37.5
6 x 3	(150 x 80)	6	39.5
6 x 2 1/2	(150 x 65)	6	46.0
6 x 2	(150 x 50)	6	52.5
6 x 1 1/2	(150 x 40)	5	59.0
6 x 1 1/4	(150 x 32)	5	62.5
6 x 1	(150 x 25)	5	66.0
6 x 3/4	(150 x 20)	5	69.0
6 x 5/8	(150 x 19)	5	70.5
6 x 1/2	(150 x 15)	5	72.5
8 x 6	(200 x 150)	2	37.5
8 x 5	(200 x 125)	2	56.5
8 x 4	(200 x 100)	2	52.5
8 x 3	(200 x 80)	2	66.0
8 x 2 1/2	(200 x 65)	2	72.5
8 x 2	(200 x 50)	2	79.0
8 x 1 1/2	(200 x 40)	2	85.2
8 x 1 1/4	(200 x 32)	2	89.0
8 x 1	(200 x 25)	2	92.0
8 x 3/4	(200 x 20)	2	95.5
8 x 5/8	(200 x 19)	2	99.0
8 x 1/2	(200 x 15)	2	99.0
10 x 8	(250 x 200)	2	53.5

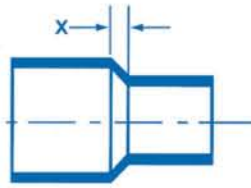
REDUCER



### REDUCER

R - 4100

RB (C x Ftg)



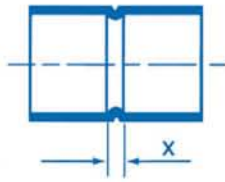
Nominal Size		Pkg. Qty.	Figure
Inch	(mm)		X (mm)
3/8 x 1/4	(10 x 8)	300	2.5
1/2 x 3/8	(15 x 10)	200	2.5
5/8 x 1/2	(19 x 15)	100	2.5
3/4 x 5/8	(20 x 19)	200	2.5
3/4 x 1/2	(20 x 15)	200	4.5
1 x 3/4	(25 x 20)	100	4.5
1 x 5/8	(25 x 19)	100	7.0
1 x 1/2	(25 x 15)	100	9.5
1 1/4 x 1	(32 x 25)	100	4.5
1 1/4 x 3/4	(32 x 20)	100	9.5
1 1/4 x 5/8	(32 x 19)	100	11.5
1 1/4 x 1/2	(32 x 15)	100	14.0
1 1/2 x 1 1/4	(40 x 32)	70	4.5
1 1/2 x 1	(40 x 25)	70	9.5
1 1/2 x 3/4	(40 x 20)	70	14.0
1 1/2 x 5/8	(40 x 19)	70	16.5
1 1/2 x 1/2	(40 x 15)	70	19.0
2 x 1 1/2	(50 x 40)	50	9.5
2 x 1 1/4	(50 x 32)	50	14.0
2 x 1	(50 x 25)	50	19.0
2 x 3/4	(50 x 20)	50	16.5
2 x 5/8	(50 x 19)	50	18.0
2 x 1/2	(50 x 15)	50	19.5
2 1/2 x 2	(65 x 50)	30	9.5
2 1/2 x 1 1/2	(65 x 40)	30	19.0
2 1/2 x 1 1/4	(65 x 32)	30	23.5
2 1/2 x 1	(65 x 25)	30	19.5
2 1/2 x 3/4	(65 x 20)	30	23.0
2 1/2 x 5/8	(65 x 19)	30	24.5
2 1/2 x 1/2	(65 x 15)	30	26.5
3 x 2 1/2	(80 x 65)	20	9.5
3 x 2	(80 x 50)	20	19.0
3 x 1 1/2	(80 x 40)	20	28.0
3 x 1 1/4	(80 x 32)	20	23.0
3 x 1	(80 x 25)	20	30.3
3 x 3/4	(80 x 20)	20	29.5
3 x 5/8	(80 x 19)	20	31.5
3 x 1/2	(80 x 15)	20	37.9
4 x 3 1/2	(100 x 90)	20	13.8
4 x 3	(100 x 80)	20	19.0
4 x 2 1/2	(100 x 65)	20	28.0

Nominal Size		Pkg. Qty.	Figure
Inch	(mm)		X (mm)
4 x 2	(100 x 50)	20	37.5
4 x 1 1/2	(100 x 40)	20	33.0
4 x 1 1/4	(100 x 32)	20	36.0
4 x 1	(100 x 25)	20	45.5
4 x 3/4	(100 x 20)	20	43.0
4 x 5/8	(100 x 19)	20	44.5
4 x 1/2	(100 x 15)	20	53.1
5 x 4	(125 x 100)	9	19.0
5 x 3	(125 x 80)	10	37.5
5 x 2 1/2	(125 x 65)	10	47.0
5 x 2	(125 x 50)	10	39.5
5 x 1 1/2	(125 x 40)	10	46.0
5 x 1 1/4	(125 x 32)	10	49.5
5 x 1	(125 x 25)	12	52.5
5 x 3/4	(125 x 20)	12	56.0
5 x 5/8	(125 x 19)	12	57.5
5 x 1/2	(125 x 15)	12	59.5
6 x 5	(150 x 125)	4	19.0
6 x 4	(150 x 100)	4	37.5
6 x 3	(150 x 80)	6	39.5
6 x 2 1/2	(150 x 65)	6	46.0
6 x 2	(150 x 50)	6	52.5
6 x 1 1/2	(150 x 40)	5	59.0
6 x 1 1/4	(150 x 32)	5	62.5
6 x 1	(150 x 25)	5	66.0
6 x 3/4	(150 x 20)	5	69.0
6 x 5/8	(150 x 19)	5	70.5
6 x 1/2	(150 x 15)	5	72.5
8 x 6	(200 x 150)	2	37.5
8 x 5	(200 x 125)	2	56.5
8 x 4	(200 x 100)	2	52.5
8 x 3	(200 x 80)	2	66.0
8 x 2 1/2	(200 x 65)	2	72.5
8 x 2	(200 x 50)	2	79.0
8 x 1 1/2	(200 x 40)	2	85.2
8 x 1 1/4	(200 x 32)	2	89.0
8 x 1	(200 x 25)	2	92.0
8 x 3/4	(200 x 20)	2	95.5
8 x 5/8	(200 x 19)	2	97.0
8 x 1/2	(200 x 15)	2	99.0
10 x 8	(250 x 200)	2	53.5

### SOCKET

S-4500

SA (C x C)



### CAP

C-5000

CA (C)



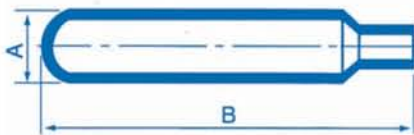
Nominal inch	Size (mm)	Pkg. Qty.	Figure	
			X (mm)	
3/8	(10)	250 / 25	2.5	
1/2	(15)	400 / 25	2.5	
5/8	(19)	200 / 25	2.5	
3/4	(20)	300	2.5	
1	(25)	150	2.5	
1 1/4	(32)	100	3.0	
1 1/2	(40)	50	3.0	
2	(50)	40	3.0	
2 1/2	(65)	40	3.0	
3	(80)	30	3.0	
4	(100)	15	5.5	
5	(125)	6	5.5	
6	(150)	4	7.0	
8	(200)	2	12.0	
10	(250)	2	18.0	

Nominal inch	Size (mm)	Pkg. Qty.	Figure	
			X (mm)	
1/4	(8)	800	0.5	
3/8	(10)	500 / 25	1.5	
1/2	(15)	300 / 25	1.5	
5/8	(19)	200 / 25	1.5	
3/4	(20)	100 / 20	1.5	
1	(25)	50	2.0	
1 1/4	(32)	30	3.0	
1 1/2	(40)	20	3.0	
2	(50)	10	3.0	
2 1/2	(65)	30	4.0	
3	(80)	20	4.0	
4	(100)	30	6.0	
5	(125)	12	6.0	
6	(150)	8	7.0	

### AIR CHAMBER

AC-6000

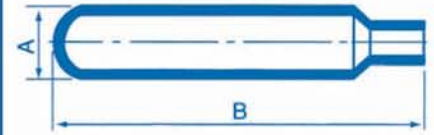
ACA (C)



### AIR CHAMBER

AE-6100

ACC (Ftg)

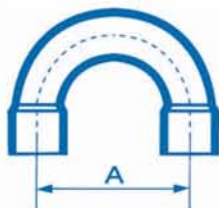


Nominal inch	Size (mm)	Pkg. Qty.	Figure	
			A (mm)	B (mm)
1/2 x 6	(15 x 150)	80	28.58	150
1/2 x 12	(15 x 300)	40	28.58	300
5/8 x 12	(19 x 300)	40	28.58	300
3/4 x 12	(20 x 300)	40	28.58	300
1 x 12	(25 x 300)	25	34.92	300
1 1/4 x 12	(32 x 300)	-	41.28	300

Nominal inch	Size (mm)	Pkg. Qty.	Figure	
			A (mm)	B (mm)
1/2 x 6	(15 x 150)	-	28.58	150
1/2 x 12	(15 x 300)	-	28.58	300
5/8 x 12	(19 x 300)	-	28.58	300
3/4 x 12	(20 x 300)	-	28.58	300
1 x 12	(25 x 300)	-	34.92	300
1 1/4 x 12	(32 x 300)	-	41.28	300

### RETURN BEND

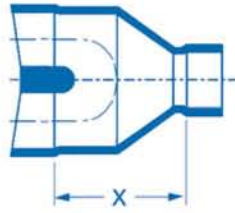
U-6500



Nominal inch	Size (mm)	Pkg. Qty.	Figure	
			A (mm)	
8	1/4	800	35	
10	3/8	400	37.5	
15	1/2	300	37.5	
15	1/2	300	38.1	
15	1/2	250	41.5	
15	1/2	-	47.5	
19	5/8	150	47.5	
20	3/4	80	62	
20	3/4	65	65	
25	1	40	70	
32	1 1/4	-	130	
40	1 1/2	-	130	

SOCKET / CAP / AIR CHAMBER / RETURN BEND

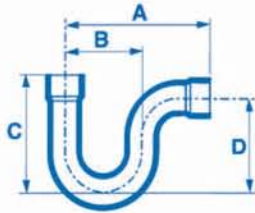
### Y-JOINT



Tube Size (mm)	X (mm)	Pkg. Qty.	
		Poly	Box
6.35	17	20	500
9.52	23	20	500
12.7	25.5	20	260
15.88	31	20	140
19.05	39	10	70
22.22	44.5	10	40
25.4	44.5	5	40
28.58	45.5	5	30
31.75	54.5	-	18
34.92	52.5	-	18
38.1	56	-	14

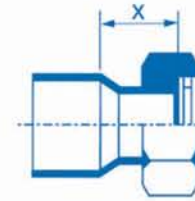
Tube Size (mm)	X (mm)	Pkg. Qty.	
		Poly	Box
9.52 X 6.35	15	20	500
12.70 X 6.35	11.5	20	340
12.70 X 9.52	19	20	500
15.88 X 9.52	17	20	400
15.88 X 12.7	23.5	20	240
19.05 X 9.52	17	10	250
19.05 X 12.70	21.5	10	200
19.05 X 15.88	29	10	130
22.22 X 19.05	38.5	10	60
25.40 X 12.70	19	10	170
25.40 X 15.88	27.5	10	110
25.40 X 19.05	34	10	60
28.58 X 19.05	31.5	5	60
28.58 X 22.22	38	5	50
28.58 X 25.40	44	5	40
44.45 X 25.40	32	-	30
50.80 X 19.05	36.5	-	30
50.80 X 25.40	29.5	-	25
50.80 X 31.75	41	-	17

### P-TRAP



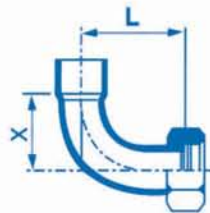
Tube Size (mm)	A (mm)	B (mm)	C (mm)	D (mm)	Pkg. Qty.	
					Poly	Box
12.7	55	30	40	31	10	250
15.88	75	40	56	45	10	100
19.05	94	50	68	53	5	60
22.22	106	55	75	58	6	30
25.4	135	70	93	74	-	20
28.58	150	80	135	114	-	15
31.75	153	80	115	93	-	12

### SOLDER JOINT (STRAIGHT)



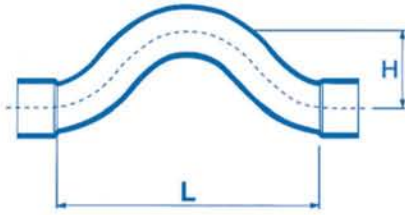
Tube Size (mm)	X (mm)	Thread	Pkg. Qty.
9.52	16	G1/2	350
12.7	16	G1/2	350
15.88	19	G1/2	300
15.88	19	G3/4	200
22.22	23	G1/2	200
22.22	21	G3/4	160
22.22	21	G1	100
28.58	24	G1	80

### SOLDER JOINT (BENT)



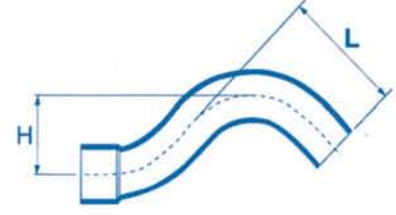
Tube Size (mm)	L (mm)	X (mm)	Thread	Pkg. Qty.
12.7	35	24	G1/2	300
15.88	35	24	G1/2	200
15.88	39	26	G3/4	120
22.22	47	30	G3/4	90
28.58	61	36	G1	50

### CROSS OVER (C x C)



Tube Size (mm)	L (mm)	H (mm)	Pkg. Qty.	
			Poly	Box
15.88	91	27.0	-	-
22.22	118	32.5	-	-

### CROSS OVER (F x C)



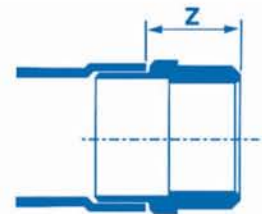
Tube Size (mm)	L (mm)	H (mm)	Pkg. Qty.	
			Poly	Box
15.88	40.8	27.0	-	-
22.22	53.8	32.5	-	-

### ADAPTER (CxM)



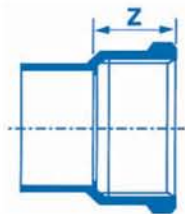
Tube Size (mm)	Z (mm)	Thread	Pkg. Qty.	
			Poly	Box
12.7	15	R3/8	20	1000
12.7	21	R1/2	20	500
15.88	14.5	R1/2	20	600
22.22	20	R3/4	20	240
22.22	18	R1/2	20	240
28.58	22	R1/2	10	150
34.92	25	R1 1/4	-	110
41.28	26	R1 1/2	-	65
53.98	29	R2	-	38

### ADAPTER (FTGxM)



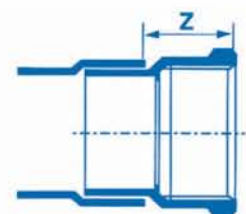
Tube Size (mm)	Z (mm)	Thread	Pkg. Qty.	
			Poly	Box
12.7	16	R3/8	20	800
15.88	20	R1/2	20	500
22.22	23	R3/4	20	240
28.58	26	R1/2	10	130
34.92	30	R1 1/4	-	80
41.28	32	R1 1/2	-	50
53.98	36	R2	-	38

### ADAPTER (CXF)



Tube Size (mm)	Z (mm)	Thread	Pkg. Qty.	
			Poly	Box
12.7	15	Rc 3/8	20	800
12.7	18	Rc 1/2	20	500
15.88	20	Rc 1/2	20	440
22.22	21.5	Rc 3/4	20	200
22.22	18	Rc 1/2	20	300
28.58	21	Rc 1/2	10	140
34.92	25	Rc 1 1/4	-	80
41.28	26	Rc 1 1/2	-	60
53.98	32	Rc 2	-	36

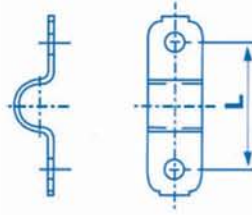
### ADAPTER (FTGXF)



Tube Size (mm)	Z (mm)	Thread	Pkg. Qty.	
			Poly	Box
15.88	19	Rc 1/2	20	500
22.22	22	Rc 3/4	20	200
28.58	26	Rc 1/2	10	130
34.92	29	Rc 1 1/4	-	80
41.28	29	Rc 1 1/2	-	50
53.98	34	Rc 2	-	38

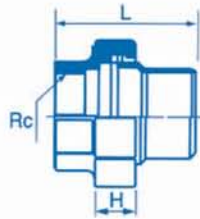
CROSS OVER / ADAPTER

### TUBE STRAP (2 HOLE STRAP)



Tube Size (mm)	L (mm)	Pkg. Qty. Box
6.35	23	2000
15.88	35	1000
22.22	44	600
28.58	51	350
34.92	51	350
41.28	58	300
53.98	73	200

### DIELECTRIC UNION (CXF)

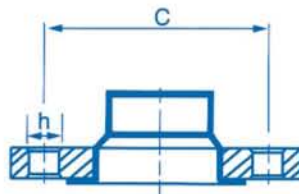


Nominal Size		Pkg. Qty.	Application Copper Tube O.D (mm)	Dimension (mm)		PT
Inch	(mm)			L	H	
1/2	15	50	15.88	46	17.0	1/2
3/4	20	50	22.22	60	18.5	3/4
1	25	30	28.58	64	20.0	1
1 1/4	32	20	34.92	74	22.0	1 1/4
1 1/2	40	12	41.28	80	24.5	1 1/2
2	50	6	53.98	92	27.0	2

## DIELECTRIC (ISOLATED) FLANGE

### DIELECTRIC FLANGE

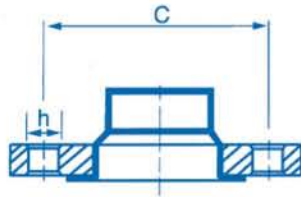
### DIELECTRIC FLANGE CLASS 10 kg/cm<sup>2</sup>



Nominal Size		Pkg. Qty.	Application Copper Tube O.D (mm)	Dimension (mm)	
Inch	(mm)			L	H
1/2	15	20	15.88	70	15 x 4
3/4	20	16	22.22	75	15 x 4
1	25	8	28.58	90	19 x 4
1 1/4	32	8	34.92	100	19 x 4
1 1/2	40	8	41.28	105	19 x 4
2	50	6	53.98	120	19 x 4
2 1/2	65	4	66.68	140	19 x 4
3	80	4	79.38	150	19 x 8
4	100	2	104.78	175	19 x 8
5	125	2	130.18	210	23 x 8
6	125	1	155.58	240	23 x 8
8	200	1	206.38	290	23 x 12
10	250	1	257.18	355	25 x 12

### DIELECTRIC FLANGE

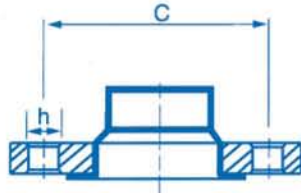
CLASS 20 kg/cm<sup>2</sup>  
DF - 8840



Nominal Size		Pkg. Qty.	Application Copper Tube O.D (mm)	Dimension (mm)	
Inch	(mm)			C	H
1/2	15	20	15.88	70	15x4
3/4	20	16	22.22	75	15x4
1	25	8	28.58	90	19x4
1 1/4	32	8	34.92	100	19x4
1 1/2	40	8	41.28	105	19x4
2	50	6	53.98	120	19x8
2 1/2	65	4	66.68	140	19x8
3	80	2	79.38	160	23x8
4	100	2	104.78	185	23x8
5	125	2	130.18	225	25x8
6	150	1	155.58	260	25x12
8	200	1	206.38	305	25x12
10	250	1	257.18	355	27x12

### DIELECTRIC FLANGE

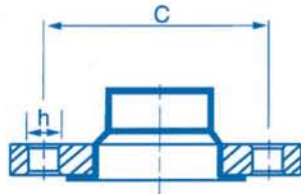
CLASS 125 LB  
DF - 8860



Nominal Size		Pkg. Qty.	Application Copper Tube O.D (mm)	Dimension (mm)	
Inch	(mm)			C	H
1	25	8	28.58	79.5 <3 1/8>	16x4
1 1/4	32	8	34.92	89.0 <3 1/2>	16x4
1 1/2	40	8	41.28	98.5 <3 7/8>	16x4
2	50	6	53.98	120.5 <4 3/4>	19x4
2 1/2	65	4	66.68	139.5 <5 1/2>	19x4
3	80	2	79.38	152.5 <6>	19x4
4	100	2	104.78	190.5 <7 1/2>	19x8
5	125	2	130.18	216.0 <8 1/2>	22x8
6	150	1	155.58	241.5 <9 1/2>	22x8
8	200	1	206.38	298.5 <11 3/4>	22x8

### DIELECTRIC FLANGE

CLASS 150 LB  
DF - 8880



Nominal Size		Pkg. Qty.	Application Copper Tube O.D (mm)	Dimension (mm)	
Inch	(mm)			C	H
1/2	15	20	15.88	60.5 <2 3/8>	16x4
3/4	20	16	22.22	70.0 <2 3/4>	16x4
1	25	8	28.58	79.5 <3 1/8>	16x4
1 1/4	32	8	34.92	89.0 <3 1/2>	16x4
1 1/2	40	8	41.28	98.5 <3 7/8>	16x4
2	50	6	53.98	120.5 <4 3/4>	19x4
2 1/2	65	4	66.68	139.5 <5 1/2>	19x4
3	80	2	79.38	152.5 <6>	19x4
4	100	2	104.78	190.5 <7 1/2>	19x8
5	125	2	130.18	216.0 <8 1/2>	22x8
6	150	1	155.58	241.5 <9 1/2>	22x8
8	200	1	206.38	298.5 <11 3/4>	22x8

## 1. Galvanic Corrosion :

It is the electrical current generated between dissimilar metals that are in direct contact in a plumbing system which causes destructive corrosion, not to be confused with chemical corrosion, which also exists. In order to successfully combat the galvanic corrosion, the metal parts must be separated in such a way that the electrical current is below 1% of the galvanic current which would exist with metal-to-metal contact. This is the function of the dielectric(isolated) union and flange differentiating them from the standard union and flange or pipe fittings.

## 2. Applications :

Use dielectric union and flanges wherever dissimilar metals occur in piping and plumbing systems or where Water Conditioners, Oil piping, Plating Tanks, Water Pump and Steam Lines.

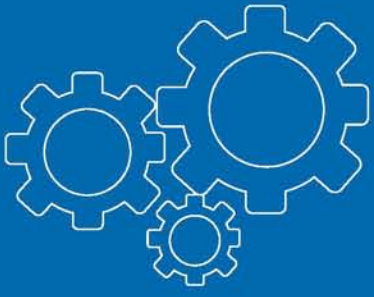
### Anode ( It corrodes more rapidly when connected )

Aluminum  
Aluminum  
Aluminum  
Iron  
Iron  
Zinc  
Zinc

### Cathode ( It doesn't corrode )

Iron  
Copper & its alloys  
Stainless steel  
Copper & its alloys  
Stainless steel  
Iron  
Copper





# YUW FITTINGS

